



Market APPLICATION Guide

Industrial Control Panels (Panel Boxes)

Over-View:

Mallory Sonalert panel mount alarms have been used in panel box applications since the product line was introduced 40 years ago. Hundreds of models are available with voltages up to 250 Vac, various sound types, sound levels, & termination options.

Applications:

22mm Hole Size , CSA (cUL), General Panel Box, High Voltage, Low Power, PLC Compatible, UL Recognized, Waterproof (UL-50; UL-508A; NEMA 3R, 4X, & 12; IP66; CSA), Hazardous Location (Class I Div II Groups A, B, C, & D)

Alarms to Use for These Applications:

<u>General:</u>	Any ZA, SC, SCE, SCL, SNP, or LSC Series models.
<u>UL & cUL:</u>	Any ZA Series, any SCE Series, and many SC Series models. See UL and cUL yellow cards for model list.
<u>Terminal Block:</u>	ZA Series or SCE Series
<u>Low Power:</u>	SCL Series
<u>Waterproof:</u>	Any ZA Series model. Use accessory rubber gasket P/N ACC03 with any SC or SCE series panel mount model. UL & cUL yellow cards show approvals to Type 4X (NEMA 4X).
<u>Snap-in:</u>	SNP2R, SNP428R, SNP428FR
<u>LED & Alarm:</u>	LSC616, LSC616N, LSC110N, LSC250N, LSC628AN
<u>22mm Hole Size:</u>	Any ZA Series model. PK-20A35EWQ, PF-20A35EWQ
<u>Tamper-Proof:</u>	Any ZA Series model. PK-27N35ERQ, PK-27A35ERQ
<u>Hazardous Location</u> <u>Class I Div II:</u>	SCH Series (SCH628R, SCH110R, SCH250R, etc.)

Continued 

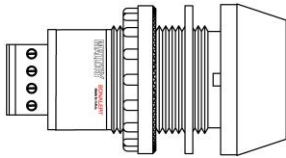
Industrial Control Panels (Con't)

Accessories to Consider for SC & SCE Series:

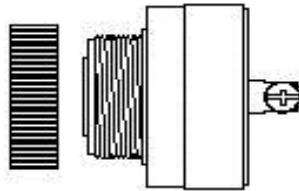
ACC01 (Metal "L" Bracket), ACC03 (NEMA Gasket), SCVC (volume control)

Other Capabilities:

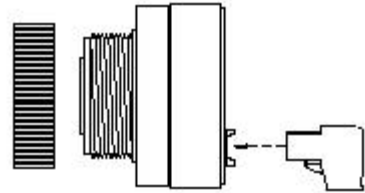
Custom Voltage Ranges, Custom Temperature Ranges, Environmental Testing, Custom Cable Assemblies, Custom Terminations



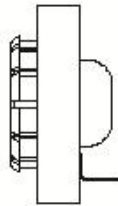
ZA Panel Series
22 mm w/Terminal Block



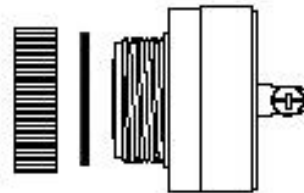
SC Panel Series
Screw Terminals



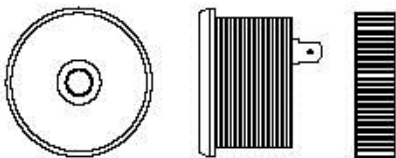
SCE & SCL Panel Series
Terminal Block



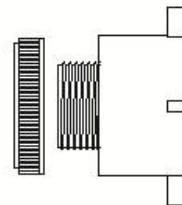
SNP Panel Series
Snap-in



SCH Panel Series
Class I Div II



PK-27N35ERQ; PK-27A35ERQ
Tamper-Proof



PK-20A35EWQ, PF-20A35EWQ
22 mm w/Wires