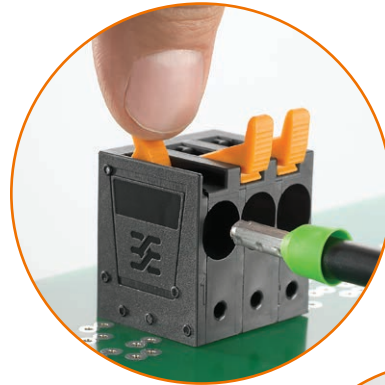


OMNIMATE® Power Terminal LUF and LUFS 15.00

Fast and Reliable Connection of Power Electronic Devices

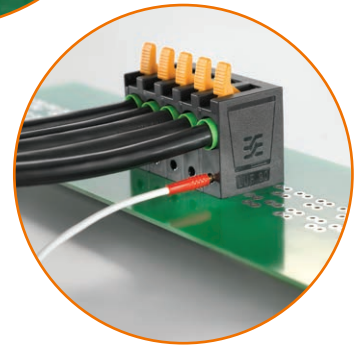
Two Handling Options

Both terminal designs feature Weidmüller's PUSH IN connection system for wiring of solid or ferruled wires from 18 AWG to 4 AWG with optional tool free actuating lever (LUFS) or screwdriver push-button actuated clamp (LUF).



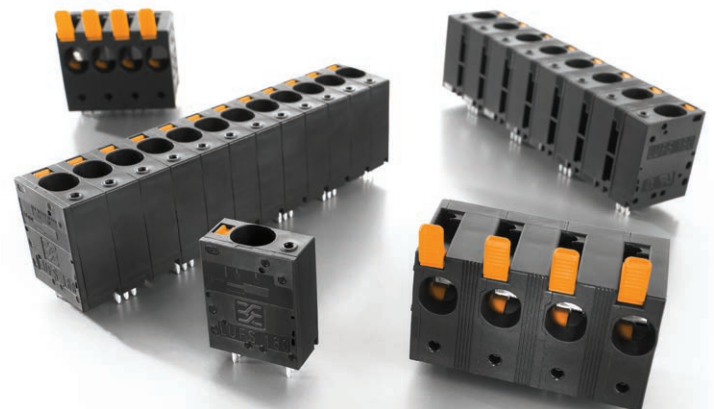
High System Integrity

From easily accessible diagnostic testing points to wire connection with low force to the circuit board, the LUF and LUFS terminals ensure the integrity of the PCB board and the electrical connection.



Suitable for High Power Applications

LUF and LUFS 15.00 are UL/CSA rated for up to 66A and 600V according to UL 1059. Specific ratings apply for the commercial, general industrial and industrial device groups. Higher voltages up to 1000V are approved for terminal blocks used with equipment of limited rating.



Reliability by Design

The contact system closes automatically after being opened, ensuring that the wire is always safely connected.



Let's connect.

www.weidmuller.com

Weidmüller 

Applications

For high power device applications where reliable components with increased safety features for high voltage are required, such as drive controllers, radio base stations and photovoltaic inverters.

Connection of
1 - Power Supply and
2 - Motor Connections



Drive Controllers

Connection of
1 - Power Supply and
2 - Cross Connections





Radio Base Stations

Connection of
1 - DC Input and
2 - AC Output



Photovoltaic Inverters

Featured Product Types

Variant - Image	Push In Actuation	Wire Gauge	Poles	Pins per Pole	Pitch mm/in	Pin Length mm/in	Orientation	
							90° Part No.	180° Part No.
LUF								
	Lever	20...4 AWG	2	4	15/.5906	5/.1969	2491800000	N/A
	Lever	20...4 AWG	3	4	15/.5906	5/.1969	2491900000	N/A
	Lever	20...4 AWG	4	4	15/.5906	5/.1969	2491910000	N/A
	Lever	20...4 AWG	5	4	15/.5906	5/.1969	2491920000	N/A
	Lever	20...4 AWG	6	4	15/.5906	5/.1969	2491930000	N/A
	Lever	20...4 AWG	7	4	15/.5906	5/.1969	2491940000	N/A
	Lever	20...4 AWG	8	4	15/.5906	5/.1969	2491950000	N/A
	Lever	20...4 AWG	2	2	15/.5906	5/.1969	2492000000	N/A
	Lever	20...4 AWG	3	2	15/.5906	5/.1969	2492010000	N/A
	Lever	20...4 AWG	4	2	15/.5906	5/.1969	2492020000	N/A
	Lever	20...4 AWG	5	2	15/.5906	5/.1969	2492030000	N/A
	Lever	20...4 AWG	6	2	15/.5906	5/.1969	2492040000	N/A
	Lever	20...4 AWG	7	2	15/.5906	5/.1969	2492050000	N/A
	Lever	20...4 AWG	8	2	15/.5906	5/.1969	2492060000	N/A
LUFS								
	Push Button	18...4 AWG	2	3	15/.5906	5/.1969	2499440000	2491820000
	Push Button	18...4 AWG	3	3	15/.5906	5/.1969	2500570000	2492220000
	Push Button	18...4 AWG	4	3	15/.5906	5/.1969	2500580000	2492230000
	Push Button	18...4 AWG	5	3	15/.5906	5/.1969	2500590000	2492240000
	Push Button	18...4 AWG	6	3	15/.5906	5/.1969	2500660000	2492250000
	Push Button	18...4 AWG	7	3	15/.5906	5/.1969	2500600000	2492260000
	Push Button	18...4 AWG	8	3	15/.5906	5/.1969	2500610000	2492270000

4 Pins per Pole - UL/CSA: 66A/600V
 2 Pins per Pole - UL/CSA: 66A/1000V

90° Orientation - UL/CSA: 66A/1000V
 180° Orientation - UL/CSA: 57A/1000V

Information

Information is available for download on the web at www.weidmuller.com.

Ref. No.	Description
LIT1802	PCB Terminals and PCB Connectors Product Line Card

Weidmuller, Canada
 10 Spy Court
 Markham, Ontario L3R 5H6
 Telephone: (800) 268-4080
 Facsimile: (905) 475-2798
 Email: info1@weidmuller.ca
 Website: www.weidmuller.ca

Weidmuller, Mexico
 Blvd. Hermanos Serdán 698,
 Col. San Rafael Oriente
 Puebla, Puebla, Mexico
 C.P. 72029
 Telephone: 01 222 2686267
 Facsimile: 01 222 2686219
 Email: clientes@weidmuller.com.mx
 Website: www.weidmuller.com.mx

Weidmuller, United States
 821 Southlake Blvd.
 Richmond, Virginia 23236
 Telephone: (800) 849-9343
 Facsimile: (804) 379-2593
 Email: info@weidmuller.com
 Website: www.weidmuller.com